



In this issue:

Chairman's Column	1
Boat Hire – the busiest season ever!	1
Work on Romsey's 'Barge Canal'	1,6
Andover Canal	1
Waterways Events	2
Prinsesse Estrith in Ireland	2
2021 AGM Agenda	3
Draft SCS AGM Minutes - 2020	3
A Note from the Treasurer	3
Accounts and notes on them for year ended 31 March 2021	4-5
Chairman's and Secretary's Report 2020/2021	5
Boatmen a surprise hit across the Pond	5
CRT Annual Report & Accounts 2020 - 2021	6
More money for Welsh canals	7
Boat licence fees for 2022-23	7



Andover Canal

Top: 2021 - The canal next to Fishlake Meadows, Romsey.
Above: 1910 - The railway bridges at Testcombe.
Below: 1996 - A Mayoral barge on the Barge at Romsey?
More pictures on [SCS website](#)



Is a Mayoral barge on the Barge? The Mayor and Mrs. Charles Mearns during their ceremonial trip on the old Barge canal on Sunday

Chairman's Column

Dear Members,

After a difficult last couple of years we have now got to our last meeting of the year. As you are aware our December meeting is our postponed 20 / 21 AGM. You should all have had the necessary bits of paper re the AGM. *[These have been included again in this issue -Ed]*

This meeting is an important one as it will decide what you, the members, want. Any suggestions for the meeting must be notified before the night.

Following the AGM formalities we shall have a get together with nibbles etc.

One item I did suggest some time back was the

idea of a New Year get together lunchtime dinner. I had one reply at the time and have since been asked by one more member if we were going to arrange anything. All details were put in previous newsletters.

If you want one, let us know!

Our November meeting was well attended for Ron and Myra Glover's plus Dave talk on their boating adventures in Ireland. A report has been put in by Myra *[See page 2]*. Thanks to them all.

Anyway we look forward to our next meeting!

Alan Rose

Boat Hire – the busiest season ever!

Cheryl Howes of Kate Boats with the latest news from Drifters – a consortium of independent self-drive hire boat companies set up to promote enjoyment of canal holidays.

AS THE main boating season draws to a close, we can reflect back on probably the busiest season for the hire boat industry ever! We missed the first six weeks of the season, including Easter, but since then Drifters operators have between them welcomed thousands of people to their boatyards.

Many of those who holidayed with us this year have enjoyed rediscovering the beauty of their own country, after travelling overseas for their main holiday for many years. And we've welcomed many newcomers to the waterways – some of whom are coming back to us again next year.

Bookings for next year are sitting at double the level they were at this point in 2019, but some of these are customers who had their 2020 and/or



More people have discovered the waterways as a place for exercise, nature and wellbeing.

and slower pace of life.

Throughout the pandemic, more people have discovered the waterways as a place for exercise, nature and wellbeing, especially in urban areas. This is a good for everyone who loves canals and rivers. The more people who value our waterways, the more the Canal & River Trust can attract funding, volunteers and friends.

I'm confident that the vast majority of the people who have discovered the waterways during this difficult time, whether it's by foot, bike or boat, will be back for more!

[Towpath Talk News](#) - 17 November 2021

Work on Romsey's 'Barge Canal'

This decade will be one where substantial changes are made to the UK's natural, and man-made, environments – in response to the overlapping climate and ecological emergencies. The role of Wilder Romsey – and all the volunteers who make it up – is to:

- ◆ help all parties involved in this around Romsey communicate with each other
- ◆ promote, and report on, projects that take forward these environmental changes

The stretch of the old Andover Canal that passes into and out of Romsey, is both a border to the new Fishlake Meadows reserve – and a fantastic wildlife corridor. For it to be of value to residents and visitors to Romsey, the right balance needs to be struck between keeping it effective as a wildlife corridor (which means leaving lots of plant life in the water and right next to the canal path) and also effective as an inviting route for people (which means keeping it sufficiently clear).

(Continued on page 6)

Waterways Events

The following is a list of waterway events due to take place within approximately 50 miles of Southampton plus other major events.

Whilst every effort is made to ensure the correctness of this information, please check with the listed contact who will be glad to confirm and supply further details. If YOU know of an event taking place that you feel should be in this list, but isn't, then please contact the editor (details back page).

OS grid references and/or postcodes are shown (where known but not

guaranteed) to aid location of the event.

As a result of the pandemic and the related restrictions put in place by the Government, virtually all events since April 2020 have been cancelled.

However, most Covid restrictions were lifted in July and it was expected that more events would be announced soon. Some or all of these events may be cancelled or amended if Covid-19 regulations require such action. Currently, there seem to be very few events being organised in our area.

Date/Time	Organiser	Details	Venue	Contact
Thu 2 Dec 2021 7.45pm	Southampton CS	2021 Annual General Meeting. Further details elsewhere in this Newsletter.	Chilworth Village Hall, Chilworth, Southampton, SO16 7JZ (SU410184).	Angela Rose: 02380 675312 Email: alanjrose@btinternet.com
Thu 6 Jan 2022 7.45pm	Southampton CS	Meeting to be confirmed.	Chilworth Village Hall, Chilworth, Southampton, SO16 7JZ (SU410184).	Angela Rose: 02380 675312 Email: alanjrose@btinternet.com
Thu 3 Feb 2022 7.45pm	Southampton CS	Meeting to be confirmed.	Chilworth Village Hall, Chilworth, Southampton, SO16 7JZ (SU410184).	Angela Rose: 02380 675312 Email: alanjrose@btinternet.com
Sun 20 Feb 2022 10.00am	Somersetshire Coal CS	Walk - Midford to Lock 22.	Meet: Twinhoe Lane, Midford, BA2 7DD. (ST 760606).	Liz Tuddenham 01225 335974
Thu 3 Mar 2022 7.45pm	Southampton CS	Meeting to be confirmed.	Chilworth Village Hall, Chilworth, Southampton, SO16 7JZ (SU410184).	Angela Rose: 02380 675312 Email: alanjrose@btinternet.com

Prinsesse Estrith in Ireland

At the November meeting Ron and Myra Glover together with Dave Thomas gave us a talk about their boating experiences on the Irish Waterways. In March 2018 they trailed their Viking 23 cruiser to Ireland. The reason for this trip was to attend the "Inland Waterways International World Wide Conference" at Athlone on the River Shannon.

Following the conference, they were based in a marina at Carrick on Shannon and from there over the next two and a half years they explored the surrounding rivers, canals and loughs.

They discovered that the Irish waterways are very different from those both in Britain and Europe. The loughs are often very large expanses of water which can be very rough in windy weather. It was vital to use GPS in order to follow the navigation markers and without it, it would be very easy to get lost around the large number of Islands.

Their talk started at Athlone on Lough Ree which is 29 km in length, they were warned that it was only safe to cross when the wind was north/south, never cross when it is west/east straight from the Atlantic.

Their route took them north along the River Shannon and the Shannon Erne Waterway but taking detours to villages and small towns off the main route. The waterways around Upper Lough Erne were very complex so charts, binoculars and GPS were in demand.

They crossed the border into Northern Ireland under the Senator

George Michael Peace Bridge which was opened in 1999, passing the remains of the original bridge that was blown up during "the troubles" and onto Enniskillen. The furthest north travelled was the southern end of Lower Lough Erne as navigation beyond this point was considered to be too risky for small boats like Prinsesse Estrith.



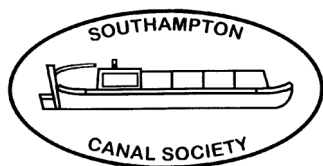
Prinsesse Estrith moored at the southern end of Lower Lough Erne

Throughout the talk we were shown maps and pictures on the screen, also we were supplied with a hand-out so we were able to follow their route. As we arrived at the various towns and villages Myra told us about the history, modern facilities including the pubs and interesting facts about the area. They found the Irish people to be extremely friendly and helpful especially members of "Inland Waterways Ireland".

Boats have to be registered but there is no licence to pay. Some of the locks were manned and a charge of 1.5 euros was paid to the lock keeper. Most of the locks are self-operated

with the use of a credit card style token which had to be purchased and this was used to pass through these very efficient electric locks. At most villages there are brick-built amenity blocks housing water, toilets, sanitary station, and laundry facilities, the same token is used for the use of these facilities.

Ron and Myra had planned to leave their boat in Ireland for longer but due to Covid restrictions they would not have been able to visit. However, between lockdowns in July 2020 they were able to bring the boat back to England to a new mooring in the Midlands.



SOUTHAMPTON CANAL SOCIETY 2021 ANNUAL GENERAL MEETING

Chilworth Parish Hall, Chilworth, Southampton, SO16 7JZ

Thursday 2 December at 8.00 pm

AGENDA

1. Announcements
2. Apologies for Absence
3. To approve the Minutes of the AGM carried out via email on 5 November 2020 (herewith).
4. Chairman's Report (herewith).
5. Secretary's Report (herewith).
6. To receive and approve the Treasurer's Report and Accounts for the year ended 31 March 2021 (herewith).
7. To consider and vote on the following motion: That in the absence of volunteers for the posts of Chairman, Secretary and Treasurer the Society be wound up on 31 March 2022.
8. If the previous motion be carried, to consider the following motion: That the residual funds belonging to the Society shall be distributed to other charities that support the same aims as the Society.
9. If the motion in Item 7 not be carried, to appoint the new Chairman, Secretary and Treasurer.
10. If the motion in Item 7 not be carried, to appoint Committee members.
11. Any other business relevant to an Annual General Meeting, where prior notice of the item has been given.

Note: In accordance with the Society's Constitution, only fully paid up members are eligible to vote at a meeting of the Society. Individual members and affiliated member organisations are entitled to one vote. Joint or family membership entitles that category to a maximum of two votes. Only members aged 18 or over are eligible to vote. All votes have to be cast in person, no proxy votes being permitted.

Draft SCS AGM Minutes - 2020

The AGM for 2019/2020 was carried out via email on the 5th November 2020 between

Chairman: Alan Rose

Treasurer: Aelred Derbyshire

Secretary: Angela Rose

The AGM agenda had previously been printed in the November 2020 Newsletter.

Item 1 : To approve the minutes of AGM held on the 4th July 2019. This was proposed by Alan Rose and seconded by Aelred Derbyshire. It was agreed by all committee member at the meeting that this item was accepted.

Item 2: To receive and approve the Chairman and secretary report and Accounts for 2019/2020. These were published in the June Newsletter. Proposed that these to be accepted by Aelred Derbyshire and seconded by Angela Rose. It was agreed by all present that these should be accepted.

Item 3: To agree the continued appointment of the current Officers and committee until the next AGM. All agreed to continue till the next AGM.

Meeting then closed

Angela Rose, Hon Secretary

A Note from the Treasurer

At the meeting in October, it was agreed that the Society would continue to meet until March 2022. This involves the Society in some expenditure for hall hire and insurance cover. The Society could use its reserves to pay these amounts, but it would deplete the Society's funds considerably. If the General Meeting in December votes to close the Society, there will less to distribute to other organisations. If, however, volunteers come forward to replace the current Committee, they will need funds to move the Society forward.

For these reasons, it was also agreed that members would pay subscriptions for the year 2021 – 2022, at the existing rate of £27 for a joint membership and £16 for a single membership. Some members had paid subscriptions in the 2020 – 2021 year, before it was decided to

suspend subscriptions. These amounts have been treated as subscriptions paid in advance, and have been rolled forward to this year 2021 – 2022.

The Society's Constitution specifies that only fully paid-up members can vote at General Meetings. If you wish to fully participate in the Annual General Meeting this month, please ensure that you have paid your subscription for the current year. You can send me a cheque or transfer the amount direct to the Society's account. Please email me for the bank details. Please send me an email when you have made payment. I will also be receiving payments before the meeting on 2 December.

Aelred Derbyshire, Hon Treasurer

Notes on the accounts for the year ended 31 March 2021

I am publishing the accounts for this year now, because I want to draw Members' attention to the serious state of the Society finances.

These figures show that even though the Society did not meet and had no income, it still had unavoidable expenses, thus reducing the Society's reserves. This situation will continue until Members decide to resume paying subscriptions again.

The subscription income shown for this year was received before it was decided not to collect subscriptions for the year. This sum therefore becomes subscriptions paid in advance for year ended 31 March 2022, and is technically a debt owed by the Society.

The expenses were our annual subscription to the IWA (£54) and, more importantly, insurance for the year to 31st December 2021 (£140.74).

Last November I had to take a chance that the Society would meet in the Chilworth Hall during calendar year 2021, and pay the annual insurance premium upfront. As it happens the Society will be meeting only in October, November and December this year.

As the figures for the year ended 31 March 2020 show, the Society had run up an annual deficit of £387.09 against a cash reserve of £1778.58. At the AGM that was scheduled for the meeting on 2 July 2020 I was going to propose a significant increase in annual subscriptions to rectify this unsustainable situation. Since then, the Society has incurred a further deficit of £194.74, as noted above (ignoring the windfall £30 from an uncollected speaker fee), thus further reducing the Society's reserves.

The insurance premium for the next calendar year will fall due this November, which I anticipate will be approximately the same. I need to know whether the Society will meet at the Chilworth Hall in 2022 before I have to pay the premium. The IWA subscription has already been paid by Direct Debit.

In August this year I received information from HSBC, the Society's bankers, that from 1 November 2021 they proposed to charge charitable accounts a service fee of £5 per month and a further fee of £0.40 per transaction. I estimate that for the last full year, to 31 March 2020, our bank charges on that basis would have been £72. This is not an insignificant sum for the Society and adds further pressure to the need for a substantial increase in subscription fees, possibly in conjunction with a reduction in the number of meetings to reduce costs.

Southampton Canal Society Income and Expenditure Account for the Year ended 31 March 2021

	£	£	£	£	Y/E 2020	£	£
Income							
Subscriptions							
2019/20					436.00		
2020/21		140.00					
Subscription pre-payment		7.00					
Donation (uncollected speaker fee)		30.00					
Raffle					293.00		
Teas			177.00		73.33	802.33	
Expenditure							
Hall hire					520.50		
IWA Membership		54.00			54.00		
Insurance		140.74			136.64		
Speaker Fees					350.00		
Secretary's Expenses					128.98		
Jubilee Trip / Cake							
Sweaters			194.74			1,190.12	
Excess of Expenditure over Income		-	17.74			-	387.79
Deposit Interest			0.19				0.70
Deficit for the Year		-	17.55			-	387.09
Balance Sheet at 31 March 2021							
Current Assets							
Bank Deposit account			347.05			346.86	
Bank Current account			1,022.78			1,040.52	
Cash in hand			4.11			4.11	
			1,373.94			1,391.49	
Reserves							
Brought forward			1,391.49			1,778.58	
Surplus/(Deficit) for year		-	17.55			-	387.09
Carried forward			1,373.94			1,391.49	

Report to the members of Southampton Canal Society

I have examined the accounts for the year ended 31 March 2021.

I have no reason to believe that the accounting records have not been properly maintained.

The accounts agree with the underlying accounting records.

Laura Sturrock 18 August 2021



Recommendation to the Society

These accounts show the serious state of the Society's finances. If it is to continue, the Society must both increase its income and reduce its outgoings.

Apart from increasing the membership, the only certain way to increase income is to raise the subscription rate. The Deficit for 2020 was roughly equal to the Subscription Income. We would need to, at least, double the annual subscription if that was the only action taken.

Society membership at the end of March 2020 was 34 subscribing members, plus one Life member and two Honorary members. The subscribing membership consisted of 8 single members and 13 joint

(Continued on page 5)

Notes on the accounts

(Continued from page 4)

memberships.

In 2020 the Raffle and sale of tea and biscuits contributed a sum close to 80% of the Society subscription income. This will decline if fewer members attend and we hold fewer meetings.

The current membership is a very small base from which to increase income by raising subscriptions. I therefore recommend that we also reduce our outgoings by spending less on Hall Hire charges and Speaker fees.

We can only reduce the Hall Hire charges by meeting less often. Historically we did not meet in May or August. It has been suggested that we do not meet in September because a number of members are away then. We could be more radical and move the AGM to June, so that we would not meet in July, August and September, which would reduce the number of meetings by two.

We should expect that when the Hall reopens there will be an increase in hire charges as the Hall Committee rebuild their reserves, and the hire charges have not risen for some years anyway.

In 2019/20 we paid for speakers at eight meetings. If we were to take the radical option above, we would have only eight meetings each year. The AGM, Quiz Night and Photographic Evening account for three of those. If the Society could find a speaker from within the members, or hold some other form of meeting, we would only have to pay a speaker for, say, four meetings a year.

In 2020 speakers were beginning to charge higher fees and expenses. This was a major contribution to that year's deficit. I expect this trend to continue.

In order to survive, I think the Society must take into consideration:

- The low membership numbers, requiring a significant increase in contributions to continue meeting as at present.
- An anticipated increase in Hall Hire fees
- A sharp rise in bank charges
- The probability that fewer meetings will reduce other income, from the Raffle and refreshment sales.
- The likelihood that speakers will be more expensive to engage.

I would note also that the Chairman and the Secretary have said they wish to stand-down at the next AGM. I also wish to stand-down.

It is impossible at the moment to put a figure on the likely increase in subscriptions necessary for the Society to continue because there are too many unknowns. As a guide, my proposal for the 2020 AGM was an increase of single membership from £16 to £21 and joint membership from £27 to £34. This was based on the Society's then costs. Any increase proposed in future is likely to be greater.

This is not a pretty picture but I feel that Members need to know the facts so that they can decide how the Society should proceed.

*Aelred Derbyshire
Hon. Treasurer*

Chairman's and Secretary's Report 2020/2021

Well, as you will all agree, the last year has been very different for all of us.

Our last meeting was in March 2020. We then had our lockdown so nothing has happened with the society.

As Chairman, I have kept in contact with the other members of the committee.

We have continued with our Peter Oates, who we must thank for the Newsletter with snippets of our own time during the last year.

I have asked for thoughts from you, the members, about the Society

and anything else you might have thoughts on. Unfortunately apart from a couple members nothing was forthcoming.

We must thank Aelred Derbyshire for his work as Treasurer and for keeping in contact with Chilworth Village Hall.

I need to also thank our Newsletter editor Peter for his interesting articles which in most cases have to be found.

We would like to think that the forthcoming AGM does bring us to the right decisions for the Society.

Alan and Angela Rose

Boatmen a surprise hit across the Pond

A couple who swapped their semi-detached house for a narrowboat last year have proved a surprise hit with an online US audience.

Paul and Anthony Smith-Storey have been documenting their new life on the canals of northwest England in YouTube videos.

The couple, with their dog Dexter, attract 6,000 to 9,000 views on each clip they upload. Almost half their fans are based overseas and Americans make up 20 per cent of their viewers.

Paul, 53, a magician before the pandemic struck, said that the interest was "fantastic".

Of particular interest in the videos was the scenery and the peaceful nature of life on their narrowboat. "A lot of viewers seem to appreciate the videos where there isn't music and it isn't fast-paced," Paul said. "We're living on a narrowboat and it's a slow pace of life. They seem to enjoy the natural sounds, the birds, the water."

Paul said that their viewers were based throughout America. "New York, LA, then in places like Oregon, Texas — it's all over the States," he said.

"We're in the northwest at the moment and a lot of narrowboat YouTubers tend to focus on the south and Stratford-upon-Avon. It's nice that we can show this to foreign viewers."

Fans have sent them presents such as dishcloths and tea towels. They are also recognised by English viewers, who knock on their door with boxes of biscuits.

One American viewer told the BBC that she found it "an absolutely fascinating lifestyle" because her country had nothing like the British canals.

Everyday life on the boat can be time-consuming compared with their life on land.

"Every couple of weeks we have to fill with water," Paul said. "Just a couple of days ago we only went three miles but had to go through 21 locks. It took us about five hours and that was with two friends helping us."

Yet neither has any regrets about their change of housing. They plan to remain afloat.

The Times - 19 August 2021

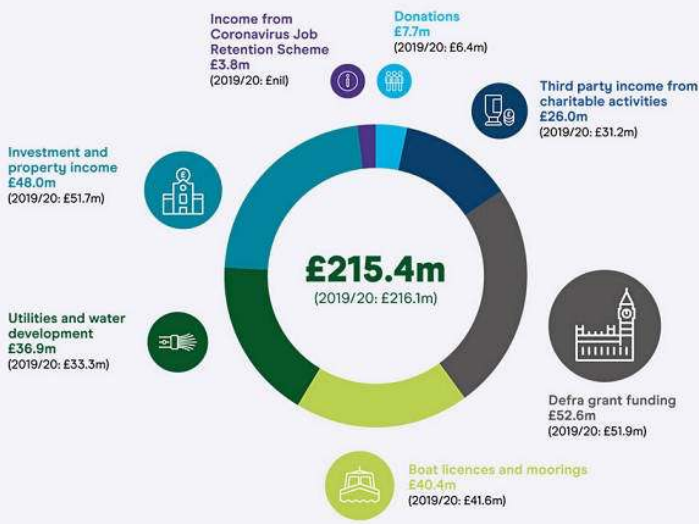
To discover what their US audience find fascinating, the couple's videos may be found at https://www.youtube.com/results?search_query=narrowboat+life+unlocked

CRT Annual Report & Accounts 2020 - 2021

Our 2020/21 Annual Report & Accounts document a year dominated by Covid-19, from the pandemic's operational and financial impact on the Trust, to the lifeline the waterways and towpaths provided throughout for millions of people across England and Wales. The Report also looks ahead to the 2021/22 Government Grant Review, and demonstrating the waterways' benefit to the nation.

Income

Income sources can be summarised as follows:



The Trust's income was £215.4 million in 2020/21 (2019/20: £216.1m), reflecting the actions taken in recent years to ensure that its income, vital for looking after the ageing waterways infrastructure, is secure. Whilst overall spend on charitable activities decreased year-on-year by £10.8m to £183.3m, partly the result of provisions for Toddbrook Reservoir made a year ago, underlying expenditure on core maintenance, repairs and infrastructure works continued to grow.

There was a small decrease in the contribution from boating, moorings and waterway-related businesses to just under 19% of income in 2020/21. This, in part, reflects the support the Trust gave to boating business and charitable partners during the pandemic and the granting of a one-month licence extension to private boat owners in light of the disruption to navigation in 2020.

Challenges

Although maintenance works in the early part of the year were halted as the Trust responded to the immediate risks of the new virus by delivering essential emergency works only, the charity adapted its way of working and a full programme of winter repair works was completed.

Work on Romsey's 'Barge Canal'

(Continued from page 1)

In conjunction with the Environment Agency and Hampshire & Isle of Wight Wildlife Trust, a Canal Maintenance Project is all about providing volunteers to undertake the right level of maintenance in order to strike this balance.



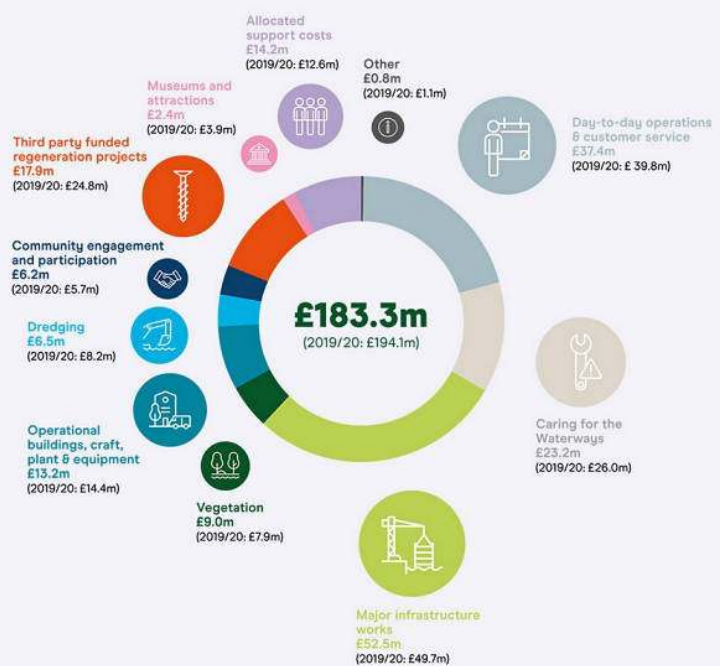
On 23 October, another 16 enthusiastic, cheerful, hard working volunteers turned out for the second day of clearing brambles and overgrown dogwood from the Canal. All deserve a big pat on the back for their huge efforts, which included completing the stretch of Canal between the bridges at Waterside and Old Road.

Future dates for Wilder Romsey Canal work will be well publicised in due course. If you want to volunteer please register interest with Marianne - MPiggin@testvalley.co.uk so numbers of volunteers are known beforehand, for organisational purposes.

The challenges in 2020/21 did not stop at the pandemic, with extreme weather and floods continuing to cause emergency works, with a breach on the Aire & Calder Navigation outside Goole in December, followed by Storm Christoph early in the new year causing extensive damage across the North West. This coincided with the year-long rebuild of Figure of 3 Bottom Lock, damaged during flooding in early 2020.

In total, extreme weather events cost the Trust over £5m in unplanned works. The Trust has taken considerable steps forward in the stewardship of its reservoirs, with a strengthened team and a major review of all high-risk assets (with a high consequence of failure) that will lead to a significant uplift in planned expenditure to further strengthen their resilience over the next few years.

Expenditure on charitable activities



This year the Trust's Annual Public Meeting was hosted online on 22 November with people able to view and submit questions to the Trust's chief executive and chair. You can view the entire meeting in this recording on [YouTube](#).

The Trust's Annual Report & Accounts can be read [here](#).

[Canal & River Trust](#) - 4 November 2021



SOUTHAMPTON CANAL SOCIETY

Established 1967

The objectives of the Society are to foster interest in canals and inland waterways, to assist in their preservation, restoration and development, and to give practical help on waterway projects.

Meetings are normally held on the first Thursday of each month at 7.45pm (see Waterways Events in this issue) at Chilworth Village Hall, Chilworth, Southampton, SO16 7JZ. OS Grid Ref: SU410184. Contact the Secretary for further information.

This Newsletter is normally published during the first week of each month in time for the Society's meeting.

President:

Brian Evans.

Chairman:

Alan Rose, 33 Brackley Way, Totton, Hampshire, SO40 3HP. Tel: 02380 675312.

Email: alanjrose@btinternet.com

Secretary:

Angela Rose, 33 Brackley Way, Totton, Hampshire, SO40 3HP. Tel: 02380 675312.

Email: alanjrose@btinternet.com

Treasurer & Membership Secretary:

Aelred Derbyshire, 31 Nelson Close, Romsey, Hampshire, SO51 7DA. Tel: 01794 651350.

Email: aelred41@sky.com

Committee:

Sue Derbyshire, Gordon Osborn.

Newsletter Editor & Webmaster:

Peter Oates, 8 Field View, Braunston, Daventry, Northants, NN11 7JS. Tel: 01788 890102.

Email: scs@sotoncs.org.uk

Society Website: <https://www.sotoncs.org.uk>

Facebook: <https://www.facebook.com/SouthamptonCanalSociety>

More money for Welsh canals

Glandŵr Cymru, the Canal & River Trust in Wales, is celebrating after the Montgomery Canal and Llangollen Canal secured over £20 million in funding from the Government's UK Levelling Up Fund.

The funding, which will restore a stretch of the Montgomery Canal in Wales (*which was reported in last month's Newsletter*), and deliver visitor improvements along the Llangollen Canal, which is part of the UNESCO World Heritage site, is the largest single investment made in improving and securing the long-term future of canals in Wales.

The projects will be delivered in partnership with Powys County Council, Wrexham County Borough Council, Denbighshire County Council and a range of partners and volunteers. The investment will benefit local people and the thousands of boaters and visitors who come to visit Wales each year, as well as economic benefit to shops and restaurants in

neighbouring towns and villages.

The funding will restore a four mile stretch of the Montgomery Canal from the Wales/England border at Llanymynech to Arddleen. The

project will involve dredging the canal and the replacement of Walls and Williams bridges to once again allow boats to navigate. Two new nature reserves will be created to protect the important wildlife along the canal.

Along the Llangollen Canal, access to the 11-mile UNESCO World Heritage Site will be improved to allow greater movement of visitors to the area encouraging cross border tourism. The project will include improvements to Trevor Basin and the footpaths around the Pontcysyllte

Aqueduct, a new footbridge over the River Dee, improving the footpath to the village of Cefn Mawr and installing new interpretation signs.

[Towpath Talk News](#) - 30 October 2021



Boat licence fees for 2022-23

CRT have announced that headline private and business boat licence fees will rise by 4% from 1 April 2022.

Why are they increasing the fees?

Income from private boat licences accounted for around 10% of CRT's annual income last year and helps ensure that the vast amount of work necessary for keeping the waterways available to boaters can be carried out. As their navigations and their associated historic infrastructure become older, and the changing climate brings more extreme weather, it is necessary to spend more money to care for them and keep them in working order.

CRT say they continue to keep licence price increases broadly in line with inflation forecasts to shield boaters from a more substantial contribution to the full costs of looking after the network.

Gold Licence holders will be advised of any changes to their licence fees following the results of the Environment Agency's consultation on boat registration charges, expected before the end of the year. From 1 April 2022, Gold Licence holders wishing to visit the Middle Levels will need to purchase an Anglian Pass from the Environment Agency.

The changes

From April 2022 the Trust will continue the phased introduction of additional pricing bands for boat widths over 2.16m (7ft 1"). This means that licence fees for boats in the top width band, over 3.24m (10ft 7 1/2") wide, will be subject to an additional 5% in addition to the 4% annual rise from 1 April 2022.

These changes to the structure of licence fees were announced in 2018, following the Trust's national consultation, and ensure that the financial contribution made by boaters towards the cost of looking after the waterways is spread fairly across the boating community. The changes for wider vessels have been applied over a five-year period from 1 April 2020 to avoid a sudden impact on any boaters.

More information on boat licences, including discounts, can be found on CRT's [boat licensing website page](#).

CRT have also published a [Boater Report](#) showing how the charity uses income from boating, and other sources, to maintain the canals and rivers for navigation: as a charity all funds raised are reinvested in maintaining the network.

[Canal & River Trust News](#) - 2 November 2021