

Newsletter

Chairman's Column

July Meeting

This evening we extend a very warm welcome to all Southampton Canal Society Members to their 48th Annual General Meeting. Details and the Agenda are included in this newsletter. Please if possible print off and bring along to the meeting.

Do please feel free to raise any questions or other concerns at the AGM. And finally, enjoy the Cheese & Wine supper to finish off the evening.

August Meeting

Just a reminder that there will be NO meeting in August as the hall is closed for the annual maintenance until 10th Sept.

September Meeting

On 3rd September, Aileen Butler will present a Magic Lantern Show of the construction of the Manchester Ship Canal, plus other canal related pictures, etc. **NB** For this meeting there will be a change of venue: St Denys Church Hall, Old Chilworth Village, SO16 7NN.

October Meeting

SCS members Ron & Myra Glover will talk about "Cruising around Vancouver."

November Meeting

Day-Star Theatre will visit us again. Further details nearer the time.

June Meeting

Our evening with John Ross, who is a member of the Waterways Craft Guild was excellent. A full write up will be included in our August Newsletter.

Alan Rose

Boats to use Coal Canal after 117 years

The Somerset Coal Canal will reopen a section of its Radford and Paulton branch with its first boat since 1898 as part of next month's Radford Canal Festival on 4 and 5 July.

This exciting moment is perfectly timed with this year's local and national celebrations of the 200th anniversary of the publication of William Smith's first 'Stratigraphic Map' in the world. This launched the science of geology and was based on his experience as this canal's surveyor.

The first 400m of the canal is the huge achievement of the Somersetshire Coal Canal Society which is also holding a Big History Day on Saturday, June 27 at the Conygre Hall in Timsbury showing how Smith, geology, the canal and railways made Bath and this part of Somerset what it is today.

Chairman Patrick Moss said "The reopening and the events are the result of years of research and the efforts of many volunteers and landowners along this section, so this summer will see the first part of the canal re-emerge from the landscape once again. It's a great start, though the reopening the canal all the way to Dundas and linking to Bath will take a long time, needing the support of the many people owning land and properties on the original route."

Dreams of restoring at least the Paulton, Radford and Timsbury parts of the canal became reality in 2011, after Paulton Parish Council approached the SCCS about potentially restoring parts of the site.

Parish Councillors were looking for a way to improve the area which formed the original Western Terminus and included Timsbury Basin, Paulton Basin and Paulton Dry Dock, near Purnell Cricket Club.

In spring 2012 work began, with the help of the current land owners and considerable progress has been made. By February 2015, the eastern stone arch ring at the dry dock was completed, meaning the restoration team are on target for the reopening.

Liz Hardman (Labour, Paulton) added: "We're all very excited and terribly keen to reinstate the canal through to Radford Mill, we think it would be very beneficial in terms of tourism for the village."

The festival, which takes place at Radford Mill on July 4 and 5, will see boats take to the water while live music from Anthony John Clarke and Flossie Malaviale and many others plays. There will also be stalls, games, historical tours, poetry and drama with William Smith in full Regency dress.

(Continued on page 9)

In this issue

Chairman's Column.....	1
Bits and Pieces	1
Boats to use Coal Canal after 117 years.....	1 & 9
Waterways Events	2 & 10
2015 AGM Agenda.....	3
Minutes of 2014 AGM	3 to 5
Chairman's Report	5 & 6
Secretary's Report	6
Treasurer's Statement	6
Top Award for Caen Hill Locks.....	6
Society Accounts 2014-15	7
New Tilting Lock.....	8
The Floating Cinema	8
More Dredging Promised	9
3D Printed Canal Bridge.....	9
New K&A signpost	10
Young and old Poddle for canal...10	

Bits and Pieces

Best Wishes

The Society Secretary, Angela Rose, is due to have an operation in Southampton General Hospital on the day of the July meeting.

I'm sure that members will join me in wishing that the operation is successful and that her recovery is swift. I'm also told that doctors have advised that she takes things very easily over the next few weeks. So, Angela, please heed doctors' orders.

New Waterways Minister

PENRITH and Border MP Rory Stewart has been named as the Waterways Minister in the new Government.

A marathon walker, he was briefly in the Army, before serving in the diplomatic service, running a charity in Afghanistan, and teaching at Harvard University.

Waterways Events

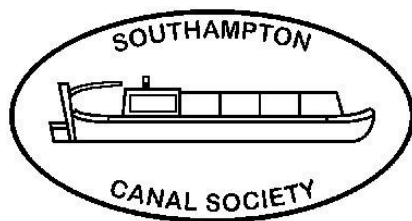
The following is a list of waterway events taking place within approximately 50 miles of Southampton. Whilst every effort is made to ensure the correctness of this information, please check with the listed contact who will be glad to confirm and supply further details.

OS grid references and/or postcodes are shown (where known but not guaranteed) to aid location of the event.

If YOU know of an event taking place that should be in this list then please contact the editor.

Date / Time	Organiser	Details	Contact
Thu 2 Jul 2015 7.45pm	Southampton CS	Society's AGM. Chilworth Parish Hall, Chilworth, Southampton, SO16 7JZ (SU410184).	Angela Rose: 02380 675312 Email: alanjrose@btinternet.com
Sat 4 - Sun 5 Jul 2015 10.00am	Somersetshire Coal CS	Radford Canal Festival. See restored canal between Paulton Basin and Radford. Pictures at http://www.coalcanal.org/restoration.php	Richard Fox: 01761 479391 Web: http://www.radfordmill.co.uk/canal.html
Mon 6 Jul 2015 7.30pm	Minal WI	Mikron Theatre - "Raising Agents." Mildenhall Cricket Pavillion, Mildenhall, Nr Marlborough, Wiltshire, SN8 2LP (SU207696). Food and beer available, bring a chair and blanket, outdoor show with shelter. Tickets: £12.00 (£10.00 concs).	Tel: 01672 516408
Tue 7 Jul 2015 2.00pm - 6.00pm	National Trust	This will involve a trip on the Trust's electric boat to Millmead Lock and a tour of the Toll House where the Guildford Borough Council Hydro Project harnesses the power of the River Wey using a reinstated turbine. Return trip to Dapdune followed by tea & cake. Cost £12.00 (Booking essential). Dapdune Wharf, Wharf Road, Guildford, Surrey GU1 4RR (SU993502).	Navigation Office: 01483 561389 Email: riverwey@nationaltrust.org.uk
Thu 9 Jul 2015 7.30pm	The Bounty	Mikron Theatre - "One of Each." Outdoor show with shelter and indoor backup. Collection after show. The Bounty, Bourne End, Bucks SL8 5RG (SU890871) Fish & Chips, food and refreshments available.	The Bounty: 01628 520056 Web: www.thebountypub.com
Sat 11 Jul 2015 7.30pm		Mikron Theatre - "One of Each." Outdoor show with shelter and indoor backup. Bring picnic, chairs and blankets. Collection after show. The Riverside Tea Garden @ Sonning Lock, Thames Street, Sonning, Reading, RG4 6UR (SU752754). Please park in the village and walk to the lock.	Tel: 07710 224008
Tue 14 Jul 2015 7.30pm	The Rowbarge	Mikron Theatre - "Raising Agents." Outdoor show, bring chairs and blankets. Food and refreshments available. Collection after show. The Rowbarge, Station Road, Woolhampton, Reading, RG7 5SH (SU572664).	The Rowbarge: 0118 9712213 Web: www.brunningandprice.co.uk/rowbarge
Wed 15 Jul 2015 7.30pm	The Oxford Science Park	Mikron Theatre - "Raising Agents." Indoor show. The Oxford Science Park, Heatley Road, Oxford, OX4 4GE. (SP539021) Tickets £12.00 (£10.00 concs) on weekday mornings from Sadler Building Reception or on the door. Refreshments available 5.30pm - 7.25pm and in interval.	The Oxford Science Park: 01865 781300 Web: www.oxfordsp.com/news-mikron.asp
Thu 16 Jul 2015 7.45pm	IWA Salisbury Group	Boules and BBQ. The Green Dragon, Old Road, Alderbury, Salisbury, Wilts, SP5 3AR (SU182275).	Ron & Myra Glover: 01722 710322 Email: glover.3@btinternet.com Jon Van de Geer: 01722 412841
Thu 16 Jul 2015 7.30pm	Basingstoke CS	Mikron Theatre - "One of Each." A savoury tale of Fish and Chips. The Fox and Hounds, 71 Crookham Road, Fleet, GU51 5NP (SU803530). Beer, Fish & Chips, food available. Bring chairs and blankets. This is an outdoor show. Collection after show.	Tel: 01252 663686 Web: www.foxandhoundscs.co.uk
Sat 18 Jul 2015 11.00am -4.00pm	National Trust	'Puffing-A- Wey.' The Steam Boat Association of Great Britain show off their magnificent steam powered craft. Themed activities for children and some free steam boat rides on the river. Dapdune Wharf, Wharf Road, Guildford, Surrey GU1 4RR (SU993502).	Navigation Office: 01483 561389 Email: riverwey@nationaltrust.org.uk
Sun 19 Jul 2015 10.00am	Somersetshire Coal CS	Walk in area of the canal. For further details please contact: Mike Chapman 01225 426948	Mike Chapman: 01225 426948
Mon 20 Jul 2015 7.30pm	The Rowbarge	Mikron Theatre - "One of Each." Outdoor show with indoor backup, bring chairs and blankets. Food and refreshments available. Collection after show. The Rowbarge, Station Road, Woolhampton, Reading, RG7 5SH (SU572664).	The Rowbarge: 0118 9712213 Web: www.brunningandprice.co.uk/rowbarge
Wed 22 Jul 2015 7.30pm	The Trout Inn	Mikron Theatre - "One of Each." Outdoor show, with shelter and indoor backup. Bring chairs and blankets. Fish & Chips, beer and food available. Collection after show. The Trout Inn, St John's Bridge, Faringdon Road, Lechlade On Thames, GL7 3HA. (SU223990)	The Trout Inn: 01367 252313 Web: www.thetroutinn.com
Thu 23 Jul 2015 7.30pm	The Plough Inn	Mikron Theatre - "Raising Agents." Outdoor show with shelter and indoor backup. Bring chairs and blankets. Beer and food available. This show will have BSL signed interpretation. Collection after show. Plough Inn, Wolvercote Green, Wolvercote, Oxford, OX2 8BD (SP495096).	Tel: 01865 556969 Web: www.theploughoxford.co.uk
Sat 25 Jul 2015 6.30pm	Reading Borough Council	Mikron Theatre - "One of Each." Outdoor show, bring a picnic, chairs and blanket. Collection after show. Forbury Gardens, Reading, RG1 3EJ (SU718736).	Tel: 0118 9372771 Web: http://beta.reading.gov.uk/article/4458/Mikron-Theatre-perform-One-of-Each---25-July
Sun 26 Jul 2015 10.00am -5.00pm	Kennet & Avon CT (Newbury Br	Newbury Waterways Festival. Victoria Park, Newbury, RG14 1DS (SU473673).	Graham Smith: 01635 580356 Email: GrahamV.Smith@btinternet.com
Tue 28 Jul 2015 7.30pm	Mikron Theatre	Mikron Theatre - "One of Each." Goring Lock, Goring, RG8 9AE. (SU596808) Outdoor show with shelter. Bring chairs, blankets and picnics. We'll perform under the bridge if it's wet! Collection after show.	Mikron Theatre Office: 01484 843701 Web: http://www.mikron.org.uk
Wed 29 Jul 2015 7.30pm	Waterfront Café	Mikron Theatre - "Raising Agents." Outdoor show with shelter and indoor backup. Waterfront Café, Benson Marina, Benson, OX10 6SJ. (SU613916) Tickets (£12) must be booked in advance. Food, beer and refreshments available.	Waterfront Café: 01491 835631 Email: info@waterfrontcafe.co.uk Web: www.waterfrontcafe.co.uk
Thu 30 Jul 2015 7.30pm	The Plough Inn	Mikron Theatre - "One of Each." Outdoor show, bring chairs and blankets. Collection after show. The Plough Inn, High Street, Long Wittenham, Abingdon, OX14 4QH. (SU545937) Fish & Chips, food and drink available.	The Plough Inn: 01865 407738 Web: http://www.theploughinnlw.co.uk

Continued on page 10



**SOUTHAMPTON CANAL SOCIETY
2015 ANNUAL GENERAL MEETING
Chilworth Parish Hall, Chilworth, Southampton
Thursday 2 July 2015 at 7.45 pm**

AGENDA

1. Announcements.
2. Apologies for Absence.
3. Minutes of 2014 Annual General Meeting held on 3 July 2014 (herewith) and matters arising.
4. Chairman's Report (herewith).
5. Secretary's Report (herewith).
6. Treasurer and Membership Secretary's Report (herewith). (Income and Expenditure Account for the year ended 31 March 2015).
7. Review of Annual Subscription Rates.
8. Election of the following Officers:-
 - Chairman
 - Vice-Chairman
 - Secretary
 - Treasurer & Membership Secretary
9. Election of Committee (the Officers plus up to three other Society Members. Additional Members may be co-opted as required).
10. Any other business relevant to an Annual General Meeting, where prior notice of the item has been given.

Note: In accordance with the Society's Constitution, only fully paid up members are eligible to vote at a meeting of the Society. Individual members and affiliated member organisations are entitled to one vote. Joint or family membership entitles that category to a maximum of two votes. Only members aged 18 or over are eligible to vote. All votes have to be cast in person, no proxy votes being permitted.

SOUTHAMPTON CANAL SOCIETY 47th ANNUAL GENERAL MEETING THURSDAY 3 JULY 2014 MINUTES OF MEETING

1. CHAIRMAN

The Annual General Meeting was chaired by Alan Rose, Chairman of Southampton Canal Society.

2. APOLOGIES FOR ABSENCE

There were apologies for absence from:-

David Doulton, Ron & Myra Glove, Malcolm & Janet Gunningham, Jon & Junia Van de Geer

3. ATTENDANCE

A register was circulated and 18 members recorded their attendance. The attendance register forms part of the minutes of the Annual General Meeting.

4. MINUTES OF 2013 ANNUAL GENERAL MEETING AND MATTERS ARISING

The minutes of the 46th Annual General Meeting held on 4 July 2013 had been provided to all members.

On being put to the vote, the minutes were accepted by the members present.

There were no matters arising.

5. CHAIRMAN'S REPORT

The Chairman's report for 2013/14 had been printed in the July Newsletter and Alan Rose highlighted some of the points, including the previous year's programme and events; some new faces had been seen at meetings, though a few more in the monthly audiences would make it more worthwhile both for our speakers and the Society. He referred to the good programme of speakers and other events lined up for the future. Sadly we had lost a number of members and others associated with the Society. He thanked

(Continued on page 4)

(Continued from page 3)

all those without whose efforts the Society would not function. He referred to the valuable work carried out by the Secretary, Angela Rose, and the Treasurer & Membership Secretary, Gill Herbert, together with the other Committee members, David Townley-Jones (the senior raffle manager, ably assisted by Laurie Pearce), Aelred and Sue Derbyshire and Gordon Osborn. Thanks were also due to Brenda Pomeroy, and her helpers, for providing the monthly refreshments; to Newsletter Editor and Webmaster, Peter Oates; our Auditor/Examiner, Laura Sturrock; and to our President, Brian Evans, and former Chairman, Paul Herbert, who were always there with help and sound advice.

The Chairman referred to the retirement of the Treasurer & Membership Secretary, who had carried out excellent work for the Society. Members were aware that Gill Herbert had decided to pass on the reins to someone else and he was pleased to announce that Aelred Derbyshire, who had been assisting Gill Herbert, had volunteered to take on these duties.

Finally the Chairman thanked all those members who regularly turn up early to meetings to help in setting up the hall.

There were no questions.

6. SECRETARY'S REPORT

The Secretary's report for 2013/14 had been printed in the July Newsletter and Angela Rose briefly spoke to that report. She expressed her thanks and appreciation to all the members for their continued support during the year; also thanking the Chairman, for leading the Society through the previous year and her fellow Committee members. There were special thanks to Peter Oates in respect of the Newsletter.

She referred to the regular advertising of Society meetings in the local and national media and outlined details of the future programme of speakers and events.

She reiterated the aims of the Society, trusted that members had felt the Society had enjoyed another successful year and were looking forward to another good year ahead.

There were no questions.

7. TREASURER AND MEMBERSHIP SECRETARY'S REPORT

The Treasurer and Membership Secretary's report for 2013/14 and the audited accounts for the year ended 31 March 2014, including the balance sheet, had been printed in the July 2014 Newsletter.

Gill Herbert briefly went through some of the details of the accounts. In her report she stated that the Society's bank balances for the year ending 31 March 2014 showed a profit of £154.34. Both income and expenditure had decreased last year as a result of fewer activities, including reducing our monthly meetings to ten. There had been an increase in raffle income but refreshments showed a slight decrease. Daystar Theatre had showed a profit as a result of a larger audience and an increase in ticket price. The cost of our annual insurance via IWA had been considerably reduced as a result of our lower overall turnover.

Four members did not renew their membership last year and we welcomed one new member.

The Balance Sheet as at 31 March 2014 showed:

Deposit Account	-	£344.88
Current Account	-	£636.68
Cash in Hand	-	<u>£ 6.86</u>
		<u>£988.42</u>

Gill Herbert wanted to thank our auditor, Laura Sturrock, for once again examining the Society's accounts and providing professional advice on the state of our finances.

She also wanted to thank Aelred Derbyshire who had stepped in to cover the role during her absences and the other Committee members for their support.

There were no questions on the report.

It was **proposed** by Aelred Derbyshire and **seconded** by David Townley-Jones that the Treasurer & Membership Secretary's report be approved and the accounts for 2013/14 be adopted and that was approved by the members present.

8. REVIEW OF ANNUAL SUBSCRIPTION RATES

The Treasurer & Membership Secretary advised that the Committee had reviewed the Society's membership subscription rates and, bearing in mind the Society's current financial position, was recommending that the rates remain unchanged in respect of the membership year commencing 1 April 2015.

Following discussion it was **proposed** by Sue Derbyshire and **seconded** by Anne Phippard that the Committee's recommendation be adopted and, upon being put to a vote, that proposal was approved.

9. ELECTION OF OFFICERS AND COMMITTEE

That part of the Annual General Meeting was chaired by the President, Brian Evans.

The President reminded members that all officer and committee posts were up for annual election. With the exception of the post of Treasurer & Membership Secretary (Gill Herbert having announced her wish to retire at this AGM), all existing officers and committee members were willing to stand for a further year. Aelred Derbyshire, who had been assisting the Treasurer & Membership Secretary

(Continued on page 5)

(Continued from page 4)

when she was away, had offered to take over as Treasurer & Membership Secretary. There had been no other nominations for any of the posts or committee membership prior to or at the Annual General Meeting.

It was **proposed** by Sue Derbyshire and **seconded** by Gordon Osborn that Aelred Derbyshire be elected to the post of Treasurer & Membership Secretary. All members present were in favour of that appointment.

It was **proposed** by Linda Pritchard and **seconded** by Ann Phippard that the other officers and committee be re-elected en-bloc (as below) and this was approved unanimously:

<u>Position</u>	<u>Name</u>
Chairman	Alan Rose
Vice-Chairman	Vacant
Secretary	Angela Rose
Treasurer & Membership Secretary	Aelred Derbyshire
Other Committee Members	David Townley Jones, Sue Derbyshire, Gordon Osborn

It was further agreed that Laura Sturrock be appointed the Society's Auditor/Examiner and Peter Oates the Newsletter Editor and Webmaster.

10. ANY OTHER BUSINESS

David Townley-Jones queried whether the costs of the proposed Chichester Boat Trip might take the Society over the insurance 'limit'. The Treasurer & Membership Secretary stated that the finances of that event would fall within the £2,000 band.

The President, Brian Evans, thanked Gill Herbert, the retiring Treasurer & Membership Secretary, for all her excellent work and also thanked the Committee members for all their efforts on behalf of the Society.

There had been no notice of any other business, relevant to an Annual General Meeting.

The meeting closed at 8.35pm.

Chairman's Report 2014-2015

The Society has enjoyed an interesting programme throughout the year and I wish to thank our President, Brian Evans, members and the Committee for their support.

Angela, our Secretary, arranged a varied selection of speakers through the year. We started in April 2014 with Pete Boyce on the further restoration of "Lucy" and other wooden narrow boats. Members also enjoyed a visit in May around Pete's "Tess Yard" situated at Braunston Turn. This was followed in June by our member, Gordon Osborn, talking about the "Ups and Downs of the South Pennine Ring."

In September, Eva Drinkwater started an enjoyable evening by showing some of her old photographs of the Society. This was followed by a presentation on the "History of Foxton Locks" obtained from Mike Beech, the curator of the Foxton Museum.

A special thank you to Aelred and Sue Derbyshire for organising the cruise on the Chichester Ship Canal on September 23rd - it was an excellent day out for all.

At the October meeting we learnt from Geoff Watts about some "Memories of the Great War." Our yearly treat in November came from the "Day-Star Theatre" with their performance of "A Bad Penny." This evening was very well supported.

At the annual December "Inter-Society Quiz" our team were on top form and at last regained the trophy, last held by SCS in 2011. An American Supper finished off the last two meetings - thanks to our members.

Early in the New Year, the Members' Photographic evening was well supported by 23 members. At our next meeting in February, 26 members welcomed Richard Thomas with another of his excellent talks about "The River Lee from Luton to Old Ford Lock, London." A very well supported evening in March finished off our year with 30 members and visitors listening to the IWA Freight Group Chairman, John Pomfret. He talked about the history of freight carrying on the waterways, and the current situation in the UK and his involvement

with it.

It has been encouraging to see, through advertising, a few new faces at our meetings. But we must remember that we have to pay most speakers a fee or a charity donation and sometimes travel expenses as well. A few more in the audience at our meetings would make it more worthwhile both for our speakers and for our Society. So please, if you are able, encourage your friends and family to come to our meetings and join the Society.

My fellow Committee members and I are always keen to hear your suggestions for speakers and any other activities you may think of.

Next, I would like to thank all those, without whose efforts the Society would not function.

Starting with the officers and committee members: thank you to our Secretary Angela Rose and the Treasurer and Membership Secretary, Aelred Derbyshire. I should point out that Aelred is a very dedicated and a valued person being able to continue the work of our previous Treasurer, Gill Herbert. Also thank you to David Townley-Jones who runs the raffle and to Sue Derbyshire and Gordon Osborn who have been valuable committee members again this Year. Gordon's son has also been updating the Society's Facebook page.

Thanks must also go to Newsletter Editor and Webmaster, Peter Oates; to our Auditor/Examiner, Laura Sturrock; and to our President Brian Evans and Paul Herbert, who are always there with help and sound advice.

In giving thanks, I must not forget to mention Laurie Pearce for his regular assistance with the raffle and to Brenda Pomeroy and her helpers for providing our tea and biscuits each month.

Our monthly raffle still remains our highest regular income and I would like to thank all those that regularly donate the prizes.

Finally, thanks to all those members that regularly turn up early to our meetings and help set up the hall and put it all away at the end.

(Continued on page 6)

Chairman's Report

(Continued from page 5)

We have a good programme of speakers and other events lined up for the future, including Day-Star Theatre again in November.

I would like to thank all members for your continued support as we enter our 49th year.

*Alan Rose
Chairman*

Secretary's Report 2014-2015

As Secretary, my thanks and appreciation first go out to all our Members for their continued support during the year. Thank you also to our Chairman, Alan Rose, for leading the Society through the last year and my fellow Committee Members who I feel are working very well together as a team. Again, I extend a special thanks to Peter Oates who often "knocks my Newsletter reports into shape".

Our meetings continue to be published in local newspapers, Radio Solent and National Waterways publications.

Our Society's aim is to encourage "New Comer's ,Boaters and Walkers" to the waterways, to look back at the history and the hard work accomplished, and still needed, to keep our wonderful British Waterways, (under The Canal & River Trust) open for all to enjoy for ever.

I trust that we all feel that the Southampton Canal Society has enjoyed another successful year.

*Angela Rose
Secretary*

Treasurer's Statement - 31 March 2015

First of all, I would like to thank Gill Herbert for the orderly way that she handed over the accounts; it made it easy for me to understand. I would also like to thank Laura Sturrock for examining the accounts so promptly, especially as she had moved house just two days before I sent them to her!

Notes on the accounts:

The most significant difference between the accounts for the two years is the Excess of Income over Expenditure figure. For year ending 2015 the figure is raised by the profit on the Daystar Theatre evening, for which we sold 51 tickets and made a "profit" of £180. The Excess number is unreliable because it is the net of all transactions in the accounting year; note that Subscriptions are apparently lower this year than last. This is because some members paid their subscription early, before the end of the previous year, so the figure at 31 March 2014 was inflated. This year I have started to split the Subscription figure in the accounts by relevant year, so next year Members will be able to see the actual figure for Subscriptions for 2015-16; it should be £640.

Similarly the figure for Hall Hire this year reflects the fact that the figure at 31 March 2014 includes Hall Hire for the first quarter of the 2014-2015 accounting year. The actual Hall Hire for 2014-15 was

£512. This includes extra hours booked for Daystar Theatre setup.

The figure for Subscriptions comfortably exceeds the current Hall Hire figure and gives us a cushion to help pay for speakers. Most months the combined income from the Raffle and Sale of Teas comes to around £25, which goes some way to meet the monthly costs. In exceptional months, like Daystar Theatre and the Quiz Evening, the Raffle raised £68 and £71, and the Sale of Teas and Wine Donations raised £32 and £22, respectively. The Hall Management Committee has told me they have no plans to increase hire rates but that may change when they have completed the renovations. These include creating smaller meeting spaces so it may be that we could hire a smaller room for most meetings. Your Committee will keep an eye on developments and keep you informed.

The Uncleared Cheque item relates to a speaker who didn't present his expense cheque before the year end. It has now been presented and paid.

Two members were removed from the list because they had not paid their subscription and had not responded to communications.

*Aelred Derbyshire
Hon Treasurer and Membership Secretary*

The accounts may be found on the next page.

Top Award for Caen Hill Locks

The historic flight of locks at Caen Hill has been awarded a top Tripadvisor award, after receiving consistently high ratings by visitors on the online review site. Earning an impressive four and a half stars out of five on Tripadvisor, a rating shared by the Parthenon and Eiffel Tower, visitors have described the site as 'free and awesome and brilliant', as well as an 'amazing engineering wonder'.

The Tripadvisor Certificate of Excellence, awarded to attractions, accommodation and restaurants that consistently receive outstanding traveller reviews, is the latest accolade for the scheduled monument, after a lock keeper on the flight won the coveted 'Lock Keeper of the Year' award earlier this year.

The 16 locks at Caen Hill were engineer John Rennie's solution to climbing the very steep hill in Devizes, and were the last part of the 87 mile route of the Kennet & Avon Canal to be completed. After the decline of canal industry left the network to fall into disrepair, the locks were restored by volunteers to full working order and reopened in 1990. The locks are now one of the most impressive examples of 19th century engineering in the country.

Mark Evans, waterway manager at the Canal & River Trust, said: "It's great to get this recognition for Caen Hill, we have a fantastic team of staff and volunteers who keep the locks running and do so much to make visitors welcome. We do really enjoy hearing their feedback, whether it's from someone who's amazed by the sheer scale of the place or has just seen their first kingfisher.

"One of the most impressive things about Caen Hill is the fact that it's over 200 years old and still as spectacular today. We're not sure what John Rennie would have made of Tripadvisor, but we bet he'd be pretty pleased that his locks are still a huge part of Devizes life."

Canal & River Trust, 12 June 2105

<https://canalrivertrust.org.uk/news-and-views/news/top-tripadvisor-award-for-caen-hill-locks>

Southampton Canal Society

Income and Expenditure Account for the Year ended 31 March 2015

	£	£	£	<u>2014</u>	£
Income					
Subscriptions					
2014/15	479.00				
2015/16	<u>81.00</u>	560.00		685.00	
Raffle		402.00		368.00	
Teas		123.76		107.50	
Wine		26.60		-	
Sales		-		18.00	
Events					
Boat Trip	352.00				
Daystar	<u>510.00</u>	862.00	-	470.00	
Other Income		<u>-</u>	1,974.36	<u>63.10</u>	1,711.60
Expenditure					
Hall hire		363.50		645.50	
IWA					
Membership	54.00			54.00	
Insurance	<u>169.60</u>	223.60		169.60	
Refunds			-	39.90	
Speaker Fees		168.65		195.00	
Donation to Lucy		40.00			
Events					
Boat Trip	352.00				
Daystar	<u>330.00</u>	682.00		330.00	
Other expenses		2.75		123.50	
Teas		4.50			
Wine		70.00			
Celebration Cake		<u>10.00</u>	1,565.00	<u>1,557.50</u>	
Excess of Income over Expenditure			409.36		154.10
Deposit Interest			<u>0.24</u>		<u>0.24</u>
			<u>409.60</u>		<u>154.34</u>

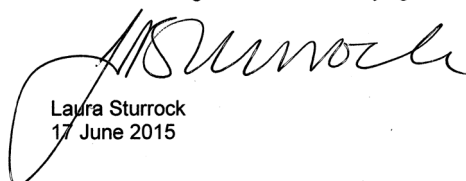
Balance Sheet as at 31 March 2015

Current Assets					
Bank Deposit account		345.12		344.88	
Bank Current account		1,077.44		636.68	
Cash in hand		4.11		6.86	
			<u>1,426.67</u>	<u>988.42</u>	
Less Uncleared cheque		28.65		0	
			<u>1,398.02</u>	<u>988.42</u>	
Reserves					
Brought forward		988.42		834.08	
Surplus/(Deficit) for year		<u>409.60</u>		<u>154.34</u>	
Carried forward		<u>1,398.02</u>		<u>988.42</u>	

Report to the members of Southampton Canal Society

I have examined the accounts for the year ended 31 March 2015.

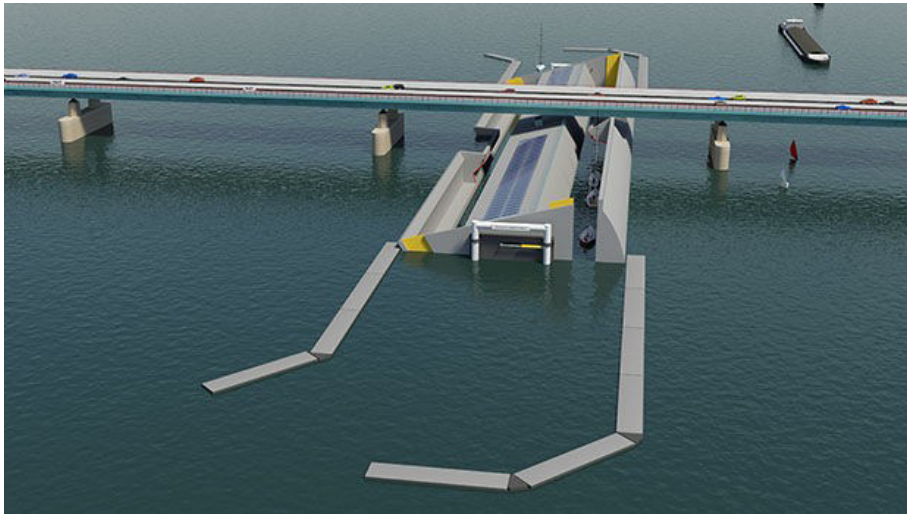
I have no reason to believe that the accounting records have not been properly maintained.
The accounts agree with the underlying accounting records.



Laura Sturrock
17 June 2015

Bridge Doesn't Open But Ships Submerge To Pass Under

A major road bridge with no need to open because ships 'submerge' under it – this is the new Tilting Lock invented by Dutch engineers at Royal HaskoningDHV.



Sailing boats enter the Tilting Lock. © Royal HaskoningDHV

Major bridges that move to allow sailing yachts to pass beneath them, like the Zeeland Bridge in the Netherlands, are causing daily traffic congestion when they open for the boats, peaking during the summer season. To resolve this problem, Royal HaskoningDHV has invented the Tilting Lock – designed to allow boats to 'submerge' under the bridge instead of it opening for them to pass under.

The Tilting Lock (Kantelsluis) is a floating structure which has two separate water filled channels with space for five yachts at a time. When the lock is level, the water surface in both channels is 4 metre lower than the water in the river. To start service the lock will tilt in order to raise the level of one of the channels to meet the water level outside the Tilting Lock

Adding 8 metre vertical clearance

Mr Carolus Poldervaart, a Royal HaskoningDHV designer: "Once the yacht is in the channel, the lock will tilt and 'submerge' the boat by 8 metre. After the boat has passed under the bridge the lock reverts to its original position to level the water inside and outside the channel again. This way almost all yachts will be able to pass under busy movable bridges without the bridge having to open. No more waiting

The Floating Cinema

A NEW summer programme of open air and on-board film screenings, performances, talks and events can be seen on board The Floating Cinema along the waterways towards Bristol.

The converted barge began its epic journey on June 8 at Brentford Lock and the free programme of film screenings, performances, talks and events will visit communities across the West of England as it loops the locks from London to Bristol and back again. It will stop in Berkshire, Wiltshire and Bath before taking up residence in Bristol from July 7-11, before making the return journey.

Whilst in Bristol the events programme will celebrate home-grown talent in collaboration with Bristol-based partners including the Arnolfini, Cube Microplex and Bristol Record Office.

Programme highlights include artist-led floating tours to Arnolfini's Floating Ballast Seed Garden, hand-on workshops with Bristol based artists Kate Rick and Kayle Brandon exploring alternative food production and a finale open air screening of archive feature 'From the Sea to the Land Beyond' (Penny Woolcock, 2012, certificate U),

traffic, no more waiting boats."

The Tilting Lock does not pump water and no weight is being displaced. It remains in position, with tilting being the only

movement. Mr Poldervaart explains: "The tilting motion is restricted, mainly to guarantee that the sides of the lock do not touch the mast of the boat."

Energy use: equivalent to four hours light from an ecolamp

The energy used by the Tilting Lock is extremely low. Mr Poldervaart continues: "The lock tilts 32 degrees in three minutes and it takes 30 seconds to set the tilting 'in motion'. In normal weather conditions this uses 0.04 kWh – as little as an ecolamp needs to burn for four hours." Stopping the tilting produces energy, as do the solar panels on the lock. This energy will be used to tilt the lock and for lighting, as well as opening and closing the lock doors.

The lock will be made of steel and will be built at a wharf and then transported to its final

location, enabling 15 to 30 'oversized' yachts per hour to pass the bridge without it opening. Capacity may vary depending on width and length of the lock. Smaller sailing and motor yachts will still be able to pass the bridge as normal.

Benefits higher than the costs

The investment for building such a lock is €60 million, depending on size, but the benefits will be enormous. A cost/benefit analysis predicts that the Tilting Lock at another busy Dutch opening bridge, the Haringvlietbrug, will yield €100 million over a period of 25 years, with a pay-back time of 12 years.

Applicable as ordinary lock

The Tilting Lock can also be used as an energy efficient ordinary lock with no water being lost when moving ships from higher to lower water levels – a persistent problem in canal systems that are dependent on rainwater to maintain sufficient water depth.

Marine Insight

<http://www.marineinsight.com/shipping-news/tilting-lock-concept-bridge-doesnt-open-but-ships-submerge-to-pass-under/>

which explores a century of life on Britain's coastline.

Most events are free to attend but places should be booked in advance to avoid disappointment. An action-packed programme will screen rarely seen film from local archives, alongside features and historic canal classics. It will also present artist talks and hands-on educational activities for all ages. The events, both on-board and on land, will explore the histories, myths and legends along the route including Reading's rock hall-of-fame, Wiltshire's world-famous crop circles and alternative trade in historic market town Newbury.

The return journey will feature new work by Floating Cinema artist-in-residence Yann Seznec who will create a floating library of forgotten sounds with communities along the route of the outward journey. It will also premiere Somewhere's new film 'Repeat to Flourish' – a visual odyssey of the Kennet and Avon Canal's industrial past, subsequent decline and present day renaissance.

For programme details and bookings visit www.floatingcinema.info
<http://www.towpathtalk.co.uk/news/brentford-to-bristol-and-back>

More Dredging Promised

CRT are planning to carry out £15 million of dredging in the next two years as part of their £80 million 10-year dredging programme. They have agreed a two-year extension of their dredging contract with Land & Water to complete the increased amount of work.

The work will include both mainline dredging and regular spot dredging. The spot dredging programme aims to identify locations where smaller scale but regular dredging should take place to improve navigation where, for example, the depth of a canal might generally be sufficient but isolated spots might cause problems for boaters.

A £2 million programme of spot dredging is being developed for the current financial year with investigations taking place in 75 places across the country. These range from the tidal gates on the River Don to the Lancaster Canal to the River Lee.

In addition £5.3 million of dredging on 11 major projects is being carried out. One project, at Zouch on the River Soar, has already been completed and a further two projects are currently being worked on at Leicester on the Soar, and on the Trent & Mersey Canal between Aston and Iron Bridge.

Vince Moran, operations director at the Trust, said: "We know how important dredging is to boaters and the targeted spot dredging

we're carrying out should make a real difference in tackling the patches where boaters can encounter difficulties. We value feedback from boaters who can give us first-hand information to help us prioritise works. Land & Water is a great partner and has carried out some fantastic work, and the extension of our contract with them will bring even more benefits to boaters over the coming years."

Boaters should contact their local waterway with any suggestions, details of which can be found here: <https://canalrivertrust.org.uk/contact-us/contacting-your-local-office>
<https://canalrivertrust.org.uk/news-and-views/news/more-dredging-planned-for-next-two-years>

Somerset Coal Canal reopening

(Continued from page 1)

Adrian Tuddenham of the SCCS said: "The canal is a natural part of the land as it is. We are proud of our efforts which stem from an archaeological investigation on the dry dock in Paulton, which might be the largest canal dry dock in England."

Somerset Guardian, 17 June 2015

<http://www.somersetguardian.co.uk/Boats-use-coal-canal-Paulton-time-117-years/story-26714670-detail/story.html>

First 3D printed steel bridge to span Amsterdam canal

A Dutch startup company has unveiled plans to use robotic printers to weld the structure drop-by-drop in the first large-scale test of the technology, a technique that could become standard on future construction sites.

Using robotic printers "that can 'draw' steel structures in 3D, we will print a (pedestrian) bridge over water in the centre of Amsterdam," engineering startup company MX3D said in a statement, hoping to kick off the project by September.

The plan involves robotic arm printers 'walking' across the canal as it slides along the bridge's edges, essentially printing its own support structure out of thin air as it moves along.

Specially-designed robotic arms heat the metal to a searing 1,500 degrees Celsius (around 2,700 degrees Fahrenheit) to painstakingly weld the structure drop-by-drop, using a computer programme to plot the sophisticated design.

"The underlying principle is very simple. We have connected an advanced welding machine to an industrial robot arm," said the bridge's designer Joris Laarman.

"We now use our own intelligent software to operate these machines so they can print very complex metal shapes which can differ each time," Laarman said of the project also involving the Heijmans construction company and Autodesk software.

So far, the robotic arm has been used to print smaller metal structures, but the bridge will be the first ever large-scale deployment of the technology, MX3D spokeswoman Eva James said.

It is hoped that the bridge will be a first step towards seeing the technique used on construction sites, especially those involving dangerous tasks such as on high buildings, she said.

The technique also removes the need for scaffolding as the robot arms use the very

structure they print as support.

The designers are now in talks with the Amsterdam city council to find a site for the project which they hope will be completed by mid-2017.

"I strongly believe in the future of digital manufacturing and local production," said Laarman. "It's a new form of craftsmanship."

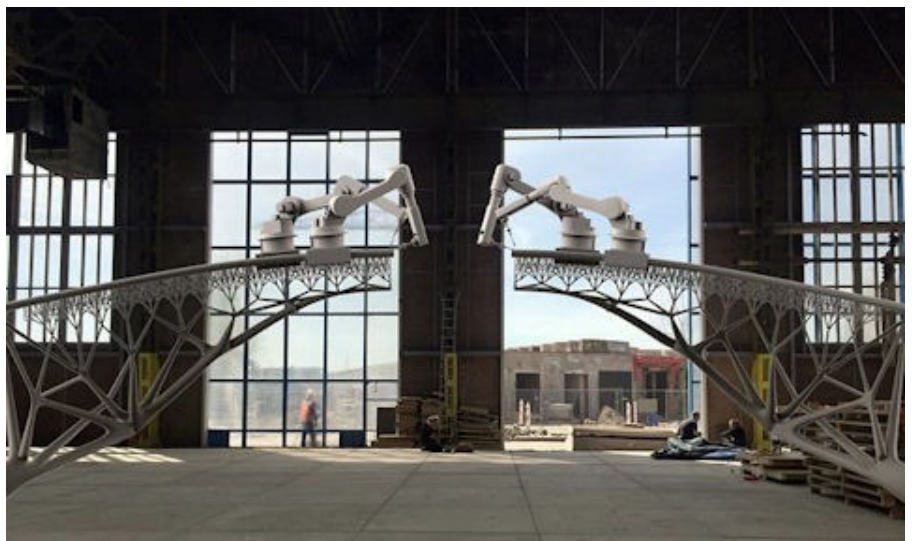
"This bridge can show how 3D printing has finally entered the world of large-scale functional objects and sustainable materials," he said.

Amsterdam city council spokeswoman Charlene Verweij said the Dutch capital was supporting the project.

"We are still in negotiations as to where exactly the bridge will be built," she said.

The Guardian, 17 June 2015

<http://www.theguardian.com/technology/2015/jun/17/dutch-startup-plans-first-3d-printed-steel-bridge-to-span-amsterdam-canal>



A computer image of the robotic printers that will 'draw' the steel bridge in 3D. Photograph: Joris Laarman/AFP/Getty Images

SOUTHAMPTON CANAL SOCIETY

Established 1967

The objectives of the Society are to foster interest in canals and inland waterways, to assist in their preservation, restoration and development, and to give practical help on waterway projects.

Meetings are normally held on the first Thursday of each month at 7.45pm (see Waterways Events) at Chilworth Parish Hall, Chilworth, Southampton, SO16 7JZ. OS Grid Ref: SU410184. Contact the Secretary for further information.

This Newsletter is normally published during the first week of each month in time for the Society's meeting.

President:

Brian Evans.

Chairman:

Alan Rose, 33 Brackley Way, Totton, Hampshire, SO40 3HP. Tel: 02380 675312.
Email: alanjrose@btinternet.com

Secretary:

Angela Rose, 33 Brackley Way, Totton, Hampshire, SO40 3HP. Tel: 02380 675312.
Email: alanjrose@btinternet.com

Treasurer & Membership Secretary:

Aelred Derbyshire, 31 Nelson Close, Romsey, Hampshire, SO51 7DA.
Tel: 01794 651350. Email: aelred41@sky.com

Committee:

David Townley-Jones, Sue Derbyshire, Gordon Osborn

Newsletter Editor & Webmaster:

Peter Oates, 8 Field View, Braunston, Daventry, Northants, NN11 7JS.
Tel: 01788 890102. Email: scs@sotoncs.org.uk

Society Website: <http://www.sotoncs.org.uk>

Facebook: <https://www.facebook.com/SouthamptonCanalSociety>

Waterways Events

Continued from page 2

Date / Time	Organiser	Details	Contact
Sat 1 Aug 2015 7.45pm	Thame Players	Mikron Theatre - "Raising Agents." Indoor show. The Players Theatre, Nelson Street, Thame, OX9 2DP Tickets £12.00 - telephone or visit Spears Travel, Greyhound Walk, Thame (tel: 01844 217228) or online. Beer available.	Tel: 07938 857291 Web: www.thameplayers.co.uk Tickets: https://www.ticketsource.co.uk/date/167272
Mon 3 Aug 2015 7.30pm	The Queens Head	Mikron Theatre - "One of Each." Outdoor show with shelter and indoor backup. Collection after show. The Queens Head, 17 Queen Street, Eynsham, Witney, OX29 4HH (SP434094) Beer & food available.	Tel: 01865 881229 Web: www.thequeenshead.net
Thu 6 Aug 2015 7.30pm		Mikron Theatre - "Raising Agents." Indoor show. Donnington Parish Hall, Stockbridge Road, Donnington, Chichester, PO19 8QT. (SU854034) Tickets £12.00 (£10.00 concs) on the door. Refreshments available.	Tel: 01243 576701
Thu 6 Aug 2015	Southampton CS	No meeting.	Angela Rose: 02380 675312 Email: alanjrose@btinternet.com
Sun 16 Aug 2015 10.00am	Somersetshire Coal CS	Walk in area of the canal. For further details please contact: Mike Chapman 01225 426948	Mike Chapman: 01225 426948
Thu 3 Sep 2015 7.45pm	Southampton CS	Aileen Butler will present a Magic Lantern Show of the Manchester Ship Canal construction, plus other canal related pictures, etc. NB change of venue: St Denys Church Hall, Old Chilworth Village, SO16 7NN (SU406187).	Angela Rose: 02380 675312 Email: alanjrose@btinternet.com

New K&A signpost

A shiny new signpost now graces the spruced-up spot where the Kennet and Avon Canal meets the River Avon in Bath. The finger signpost was unveiled at the end of a volunteer project to clear 50 years of unrestricted plant growth at the junction and plant anew. Volunteers from the Bath and Bristol branch of the Kennet and Avon Canal Trust did the clearing and planting. The trust funded the project, the Canal and River Trust advised on the specification and produced the planting scheme, and the Widcombe Association paid for the plants.

Bath resident Ian Herve, vice-chair of the local branch of the trust,

Young and old Poddle for canal

SPONSORED walkers have boosted a canal restoration fund by more than £8,000. On a sunny day with a cooling breeze, 142 people strolled across the South Downs for the Wey and Arun Canal Trust. Proceeds from the annual Poddle last Sunday totalled £6,750 and with the Gift Aid on most of the proceeds, the trust was able to top it up to more than £8,000. The money will go to restoration projects along the length of the canal, which runs 23 miles from Pallingham to Shalford in Surrey.

This year, the Poddle started and finished at St Michael's Church hall in Amberley, following an 12½-mile route across the South Downs

said Widcombe residents jumped at the chance to help out with the bee-friendly plants. "That part of the river is very important to them," Mr Herve said.

The new signpost at the historic canal junction, a quarter of a mile south of the Pulteney Weir, was unveiled by Rob Dean, the chairman of the Kennet and Avon Canal Trust, on Friday June 5.

The junction was completed in 1810 when the canal first opened, and was modified in the 1960s during the city's flood defence works.

Bath Chronicle 10 June 2015

<http://www.bathchronicle.co.uk/New-signpost-marks-spruced-junction-Kennet-Avon/story-26673289-detail/story.html>

National Park.

Walk organiser Margaret Darvill said: "We are most grateful to all the people of several generations who found sponsors and walked on the Poddle. Thanks also to the volunteers who helped stage the walk, from those who made all the arrangements and marked out the route to the people who provided refreshments and acted as marshals."

Chichester Observer, 16 June 2015

<http://www.chichester.co.uk/news/local/young-and-old-poddle-for-canal-1-6801079>